

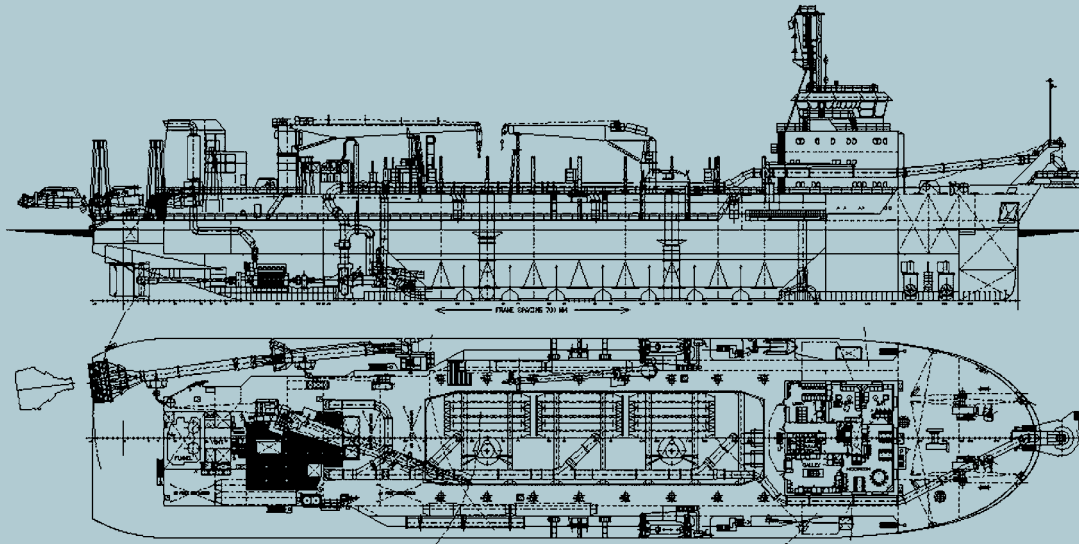


**Dredging  
International**

Marine & Waterway Contractor



## DP/DT Trailing Suction Hopper Dredger Lange Wapper



**Dredging International nv**  
 Haven 1025 - Scheldedijk 30  
 B-2070 Zwijndrecht, Belgium  
 T +32 3 250 52 11  
 F +32 3 250 56 50  
 info@deme.be  
 www.deme.be

## DP/DT Trailing Suction Hopper Dredger Lange Wapper\*

| construction year // 1999 |                 |                      |                       |
|---------------------------|-----------------|----------------------|-----------------------|
| dimensions                | length o.a.     |                      | 129.80 m              |
|                           | breadth o.a.    |                      | 26.82 m               |
|                           | moulded depth   |                      | 10.80 m               |
|                           | draught maximum |                      | 9.81 m                |
| dredging depth            |                 |                      | 28.00 m               |
|                           |                 |                      | 41.00 m               |
|                           |                 |                      | 50.00 m               |
| suction pipe Ø            |                 |                      | 1,200 mm              |
| discharge pipe Ø          |                 |                      | 1,000 mm              |
| hopper capacity           |                 |                      | 13,700 m <sup>3</sup> |
| loading capacity          |                 |                      | 20,333 t              |
| maximum speed loaded      |                 |                      | 14.20 knots           |
| power                     | total installed |                      | 13,860 kW             |
|                           |                 | with D.R.A.C.U.L.A.® | 14,976 kW             |
|                           | on pumps        | dredging             | 3,200 kW              |
|                           |                 | shore delivery       | 5,520 kW              |
|                           | propulsion      | sailing              | 11,520 kW             |
|                           |                 | trailing             | 8,060 kW              |

\* this hopper can be equipped with the D.R.A.C.U.L.A. system \* joint ownership